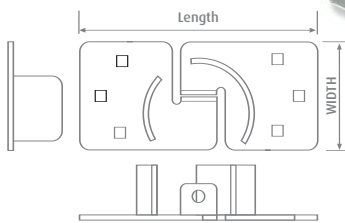


4000 Series

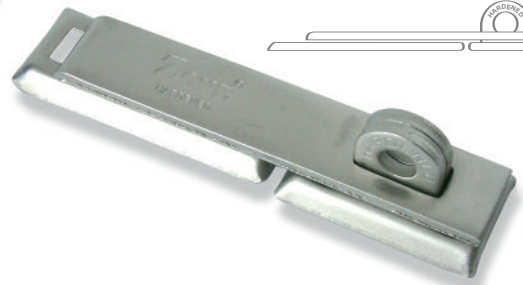
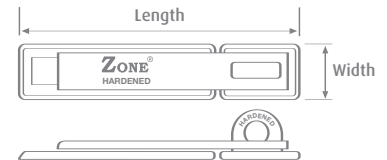


Steel Hasps

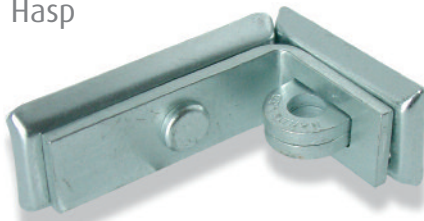
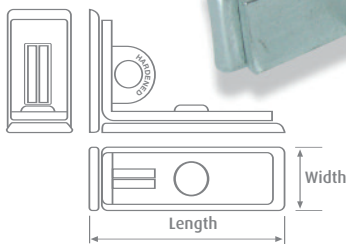
4000/V Steel Hasp



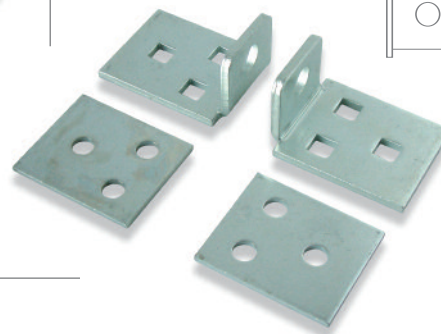
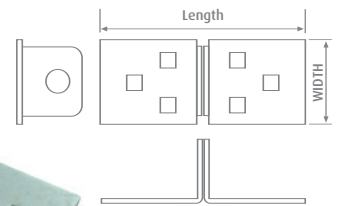
4100/4200/V Steel Hasp



4150/V Steel Hasp



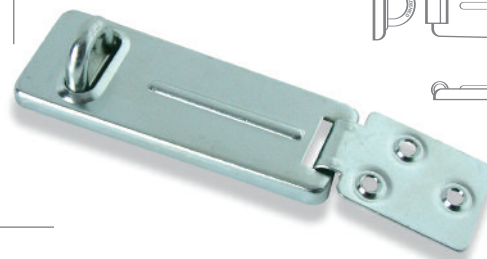
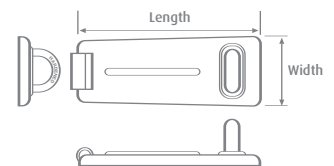
4250/V Steel Hasp



General Specification

- Hardened steel except 4300/V
- Protective plating
- Highly resistant to abuse attack
- Concealed fixing
- Easy to install
- Fixing screws supplied

4300/V Steel Hasp



Technical Specification

Product Code	Overall length (mm)	Overall width (mm)	Material	Staple capacity (mm)
4000/V	210.0	105.0	Hardened steel	13.5
4100/V	190.0	44.5	Hardened steel	13.5
4150/V	120.0	44.5	Hardened steel	13.5
4200/V	229.0	75.0	Hardened steel	13.0
4250/V	135.0	51.0	Hardened steel	13.5
4300/V	119.0	45.0	Wrought steel	12.0